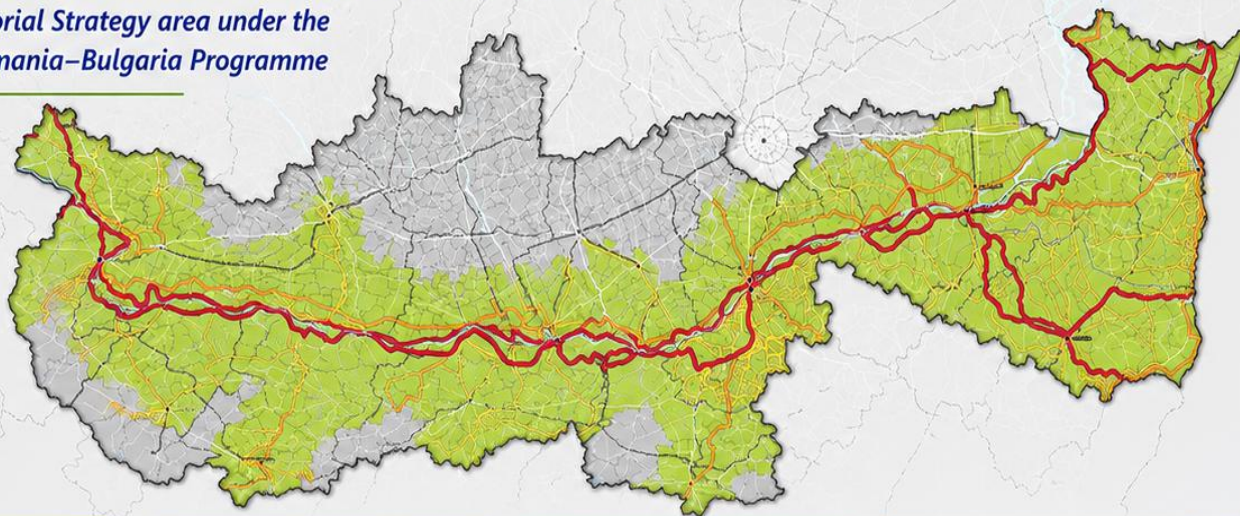


# Interreg VI-A Romania-Bulgaria Programme

## THE TERRITORY OF PO5 INTERVENTION

Integrated Territorial Strategy area under the Interreg VI-A Romania-Bulgaria Programme



### KEY FIGURES

 **≈ 50,000 km<sup>2</sup>**  
(~70% of the programme area)

 **434**  
local administrative units  
from both countries

 **> 3 million**  
inhabitants



### 1 A DIVERSE TERRITORY UNITED BY THE DANUBE

- Significant territorial differences between eastern, central and western areas.
- Differences in accessibility, economic development and tourism services.
- The Danube acts as a shared natural asset and development corridor that drives cross-border growth.



### 2 HOW THE TERRITORY WAS DEFINED

- Technical and territorial analyses.
- Extensive stakeholder consultations (on-site and online events).
- Bilateral decision-making process.
- 20 km buffer around EuroVelo 6.
- Three strategic North-South axes:
  - ➔ Craiova – Vratsa
  - ➔ Giurgiu – Veliko Tarnovo
  - ➔ Constanța – Dobrich



### 3 RICH HERITAGE, STRONG POTENTIAL

- EuroVelo 6 follows parallel routes in Romania and Bulgaria along the Danube.
- EV6 within the ITS area:
  - Romania: 1,102 km
  - Bulgaria: 970 km
- National routes:
  - Romania: 400+ km
  - Bulgaria: 300+ km
- Local routes:
  - Romania: 2,100+ km
  - Bulgaria: 2,800+ km
- Three North-South corridors: approximately 400 km



### 4 KEY CHALLENGES

- Infrastructure gaps.
- Uneven accessibility across the territory.
- Limited tourism services and visitor facilities.
- Insufficient integration of natural and cultural assets.



### 5 OUR FOCUS – A MORE COHESIVE REGION

- ✓ Sustainable tourism
- ✓ Cycling infrastructure
- ✓ Connectivity
- ✓ Valorisation of natural and cultural assets

Creating a more attractive, accessible and cohesive cross-border region.



Together for a greener, better connected Danube region.

**Interreg**  
Romania – Bulgaria

 Co-funded by  
the European Union



# Our specificities

## WHAT MAKES OUR IMPLEMENTATION OF PO5 DISTINCTIVE

*A genuinely integrated territorial strategy, jointly developed by Romania and Bulgaria*

### 1 BUILT ON FUNCTIONAL TERRITORIAL LINKS



- ✓ A large, coherent intervention area structured around key territorial connections.
- ✓ Designed around the EuroVelo 6 corridor and three strategic North-South axes.
- ✓ Links the Danube region with inland urban centres and tourism destinations.

### 2 HIGHLY PARTICIPATORY GOVERNANCE MODEL



- ✓ Defined through technical analyses and extensive consultations.
- ✓ On-site and online stakeholder events.
- ✓ Joint decisions by Romanian and Bulgarian bodies.
- ✓ **Strong ownership** among local authorities, tourism actors, cycling organisations and regional stakeholders.

### 3 INTEGRATED PACKAGES OF ACTIONS



- ✓ A comprehensive set of interventions working together.
- ✓ More than infrastructure: building services, experiences and value.
- ✓ Creating a **cross-border tourism ecosystem** that generates economic opportunities for local communities.

### 4 LONG-TERM VISION AND SUSTAINABLE IMPACT



- ✓ The full cycling network requires investments beyond the current programme period.
- ✓ PO5 is designed as a catalyst that establishes the **strategic backbone**.
- ✓ Mobilises and leverages future funding sources.
- ✓ Ensures **long-term sustainability** and **impact** for the Danube region.



Not a collection of isolated projects, but a joint strategy for lasting impact and a more competitive, connected and sustainable Danube region.



Together for a greener, better connected Danube region.

Interreg  
Romania – Bulgaria



Co-funded by  
the European Union

