

Made to measure: the first Interreg examples

Besiana Ninka, Phil Heaton, Jasmina Lukic | Interact

11 June 2026

Interact



Co-funded by
the European Union
Interreg



This meeting will be recorded.

Please turn off your video if you do not want to be recorded.
Recording meetings helps us share content with those who cannot be here.

Thank you

Session objectives



Present 3 measures designed to be implemented in Interreg and developed within the Performers WG



Share practical lessons learned from presenters



Provide insights to support other programmes in developing their measures



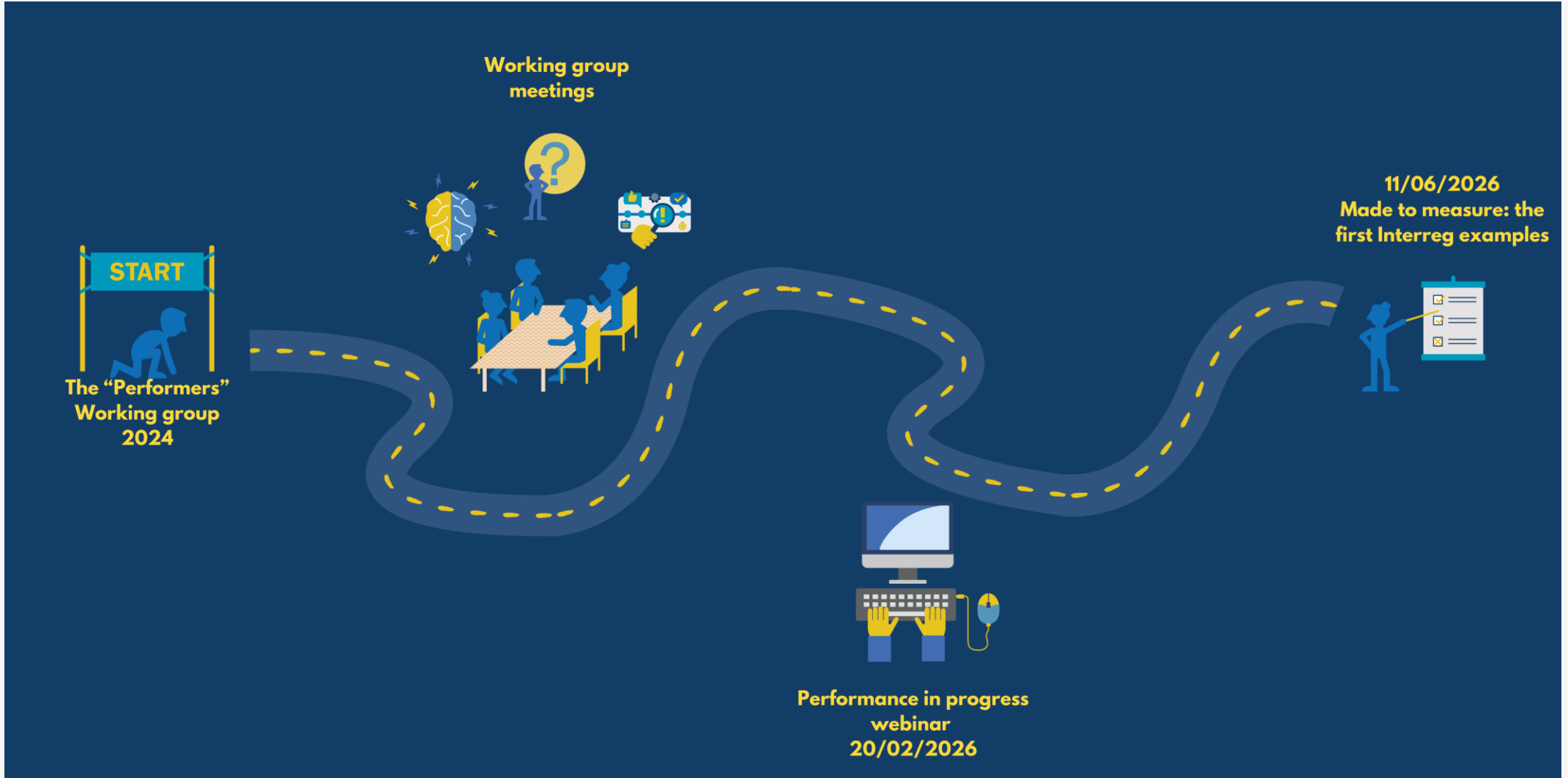
To learn from each other, discuss and exchange



**But before we
start...**



A little bit of history...



...and a few reminders...

Why are we discussing P-BA?

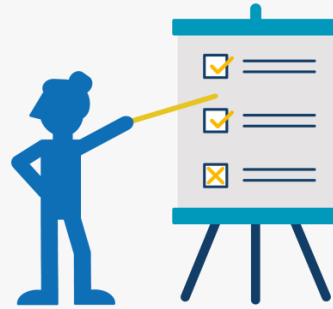
Changes in post 2027 Interreg delivery mech

One Interreg Plan; Interreg Plan chapters

Less rules on the 'lower level'

New intervention logic framework

New payment mechanics – P-BA



The basic principles of P-BA

Payment is based on meeting pre-agreed conditions *not on expenditures*

The purpose of P-BA is:
a) to ensure value for money, because payment is only provided in full if all pre-agreed conditions are fulfilled;
b) to focus verification efforts on checking quality rather than costs

An ideal P-BA mechanism balances the need to reserve some funds to act as an incentive to meet all conditions; while providing regular cash flow to enable delivery of desired outcomes

P-BA for an Interreg



Intervention logic – key building blocks

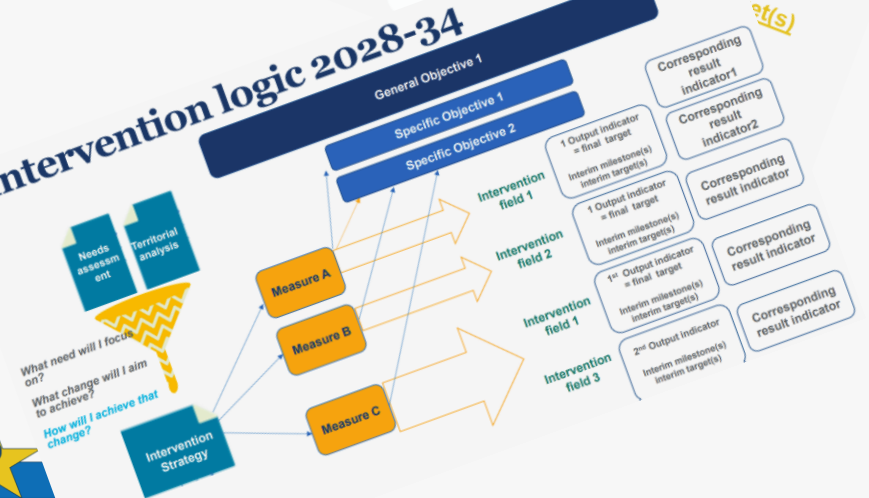
Measure

Intervention field(s)

Output indicator = Final target

Milestone

Intervention logic 2028-34

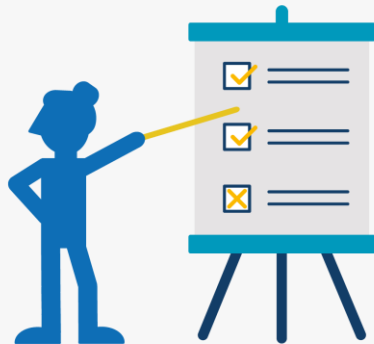


...now back to today's objectives:

Interreg measure – PBA - Example

Measure	
Reform /investment/Both	
Overall objective	
Specific objective	
Intervention field (IF1)	
Target (interim/final) for IF1	
Intervention field (IF2) if applicable	
Target (interim/final) for IF2 if applicable	
Milestones	
Result indicators (IF1)	
Result indicators (IF2)	

Members of the Performers WG presenting the potential future measures:

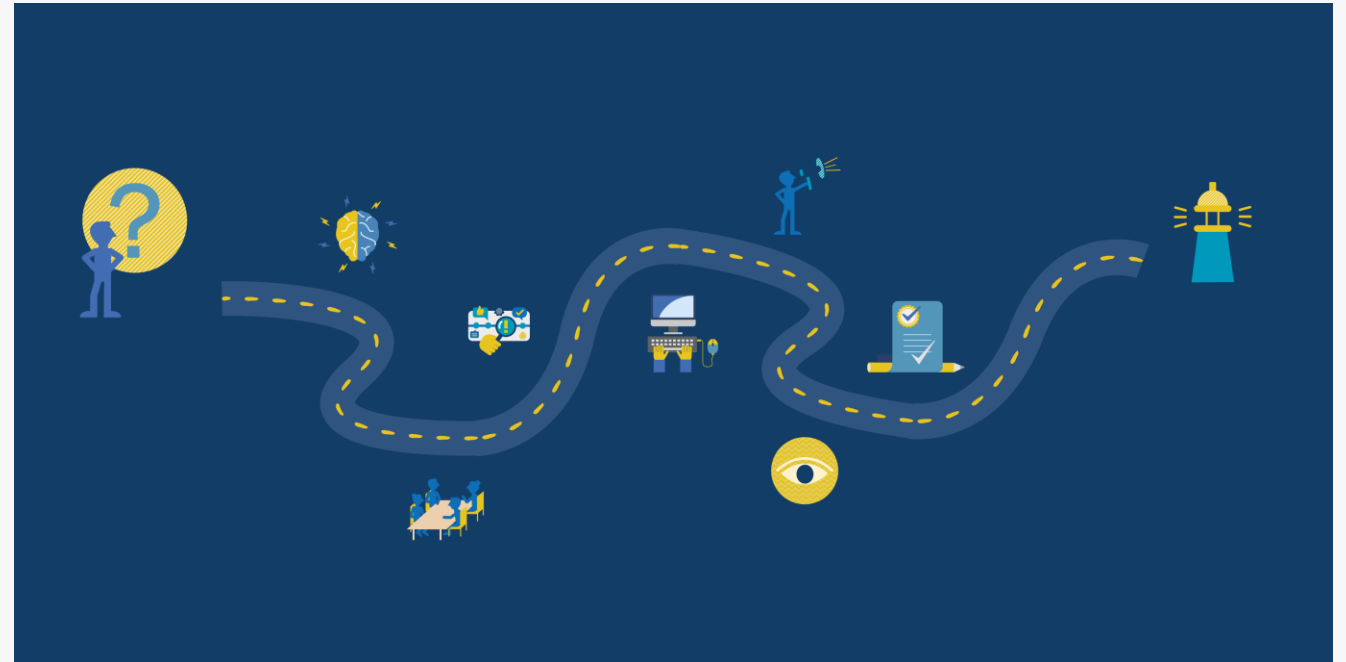


Oana Cristea - Interreg IPA Romania-Serbia

Merike Niitepold - Interreg Central Baltic

Stef Peeters - Interreg Flanders-Netherlands

What's next



Intervention Logic (IL) upcoming events

End of June	Survey and HIT Factsheet Intervention Logic (IL)
July - September	Collecting your feedback from the survey
17 September online	Let's discuss HIT Intervention Logic (IL)
27-28 October Budapest	Let's agree HIT Intervention Logic (IL) + Application Form (AF)
10 November online	Let's agree HIT Intervention Logic (IL)

Continuing the work in P-BA themes


1. Intervention Logic & Programme Design - **DANI**
2. Programme & Project Life Cycle - **PHIL**
3. Programme Financial Management (Upper Level) - **GREG**
4. Control and Audits - **JASMINA**
5. Matching Upper & Lower Levels - **MACIEJ**





P-BA on the la website

Cooperation can be complex; our job is to make it easier.

Interact  Co-funded by the European Union Interreg

- About Interact & our service
- Programme management**
- Project management and skills
- Communication & visibility
- Finance & control
- Synergies & cooperation

Organisation	Implementation	Post 2027
Monitoring systems	Closing programmes 2014-20	Future regulatory discussions
Partnerships	Cross-border obstacles	Interreg wide consultation
Procedures	EGTCs	Programme own consultations
Roles and responsibilities	Harmonisation and simplification	<u>Performance-based approaches</u>
	Localism and PO5	
	Programme evaluation and indicators	
	Small project funds	

Cooperation can be complex; our job is to make it easier.

Interact  Co-funded by the European Union Interreg

- About Interact & our service
- Programme management
- Project management and skills
- Communication & visibility
- Finance & control
- Synergies & cooperation

Performance-based approaches

The essence of a performance-based approach (P-BA) is that it emphasizes **what** must be achieved, as opposed to how it must be done.

In P-BA, clear performance goals are defined in advance. Payments are linked to meeting these pre-agreed goals, not to expenditures or activities undertaken. The focus shifts from inputs to outputs.

Even before the Commission published the draft Post 2027 regulatory package, it was evident that we were moving toward P-BA. Now it is clear that this approach will (subject to Member State agreement) be the delivery mechanism between the Commission and the programmes. This means that success of programmes will be measured by the achievement of agreed **milestones** and **targets**.

This approach (or the use of simplified cost options) is also **recommended for payments between programmes and projects**.

As this model becomes the standard framework, it is important that we understand what it is, how it works and how to operate effectively within it.

Where to start

Once you have read the draft regulatory package, particularly the [Performance Framework Regulation](#), you can proceed to the Interreg Knowledge Fair presentation, "An elementary Performance-based approach (P-BA) experience".

As simply going through the materials and slides does not always provide the full picture, we invite you to explore what we are currently working on below and join us.

What we are working on

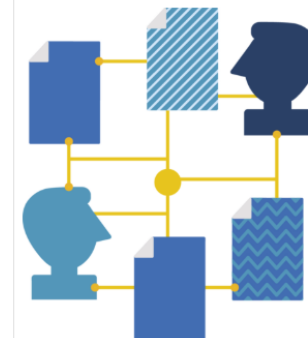
If you would like to better understand the basics of P-BA, we invite you to join our upcoming webinar P-BA in Interreg: the basics, planned for the end of March. Further details will be published soon. During the webinar, we will walk you through the basic principles of P-BA, using practical examples and key considerations.

Who to contact

For more information, please contact [Grzegorz Golda](#).

Recent Events

Performance in progress: the P-BA journey so far and what's next



📅 20 February 26 | 🟢 Online



P-BA

Teams channel & sharepoint

[join the team](#)

PA Programme and project manage... ⋮
 Announcements and updates
 Artificial Intelligence and Interreg - AI e...
 Capitalisation
 Evaluation and indicators
 Informal working group on indicators
P-BA in Interreg
 Small projects community

SharePoint

PA Programme and project management 👤 [Go to the Team](#) [Home](#)

Documents ▾

All Documents In channels | 📄 📄 📄 📄

Name ▾	Modified ▾	Modified By ▾
Announcements and updates	March 21, 2025	SharePoint App
Artificial Intelligence and Interreg - AI e...	October 12, 2025	Arkam Ograk Interact
Capitalisation	March 21, 2025	SharePoint App
Evaluation and indicators	March 21, 2025	SharePoint App
Informal working group on indicators	March 21, 2025	SharePoint App
P-BA in Interreg	Yesterday at 10:53 ...	Kevin Fulcher Interact
Small projects community	March 21, 2025	SharePoint App

Thank you for being here!

Your opinion matters to us.

Please take a few minutes to provide us with feedback to help us improve our services.



Cooperation works

All materials will be available on:
Interact.eu/Library

Want to discuss it? Join our MS Teams environment!
Portal.Interact.eu | Programme and Project Management

Interact



Co-funded by
the European Union
Interreg

Disclaimer

Publisher

Interact Programme

Date updated

11 June 2026

Primary knowledge area

Performance-based approaches

Author(s)

Besiana Ninka, Phil Heaton, Jasmina Lukic

Unless otherwise stated,
licensed under [CreativeCommons.org](https://creativecommons.org).
For more information visit creativecommons.org

