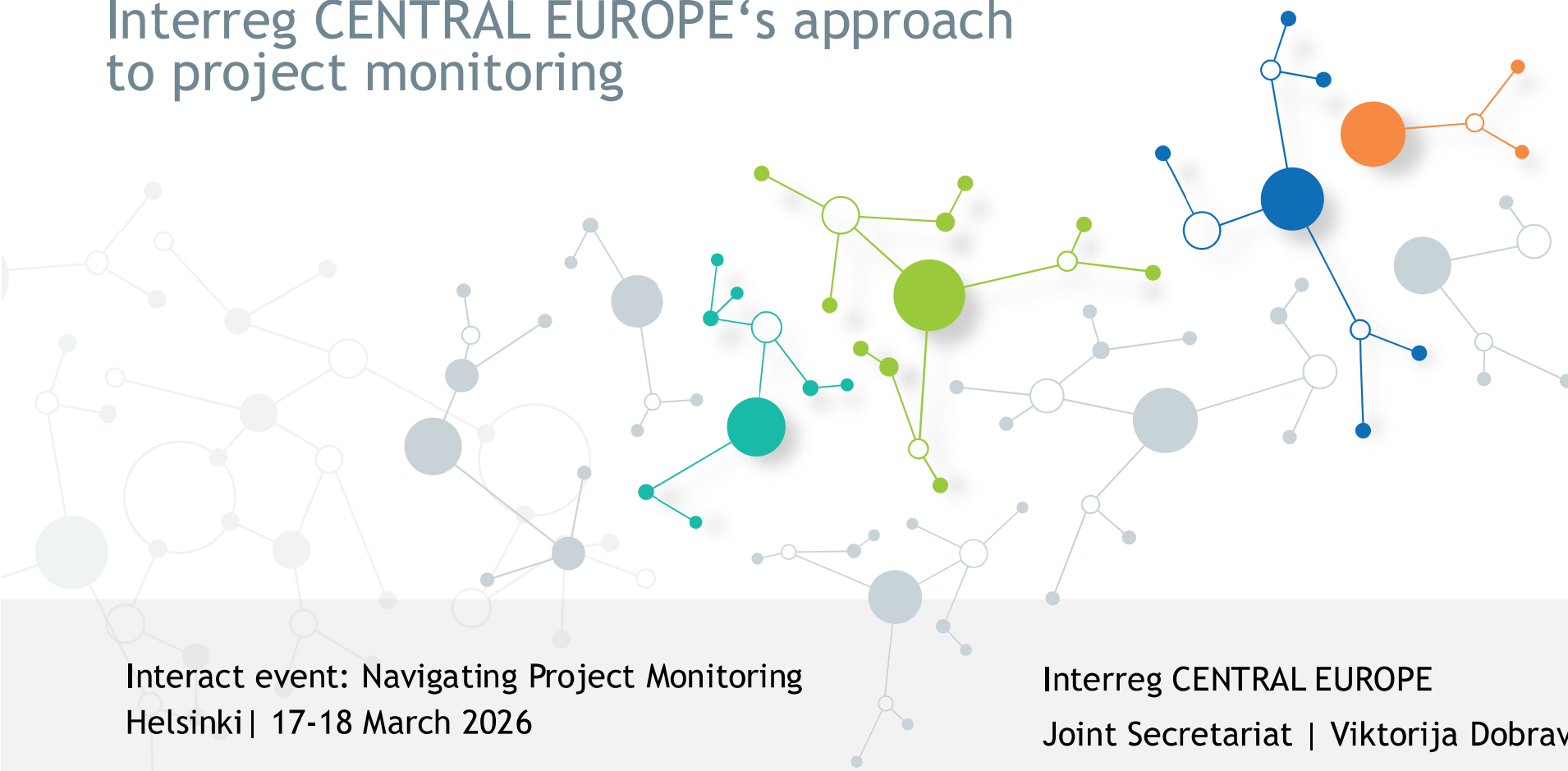




Interreg CENTRAL EUROPE's approach to project monitoring



Interact event: Navigating Project Monitoring
Helsinki | 17-18 March 2026

Interreg CENTRAL EUROPE
Joint Secretariat | Viktorija Dobravec

REPORTING AND MONITORING - PROJECT LEVEL

Three main elements:



- Continuous reporting and monitoring
 - Continuous flow of information between partnership and MA/JS
 - Upload of deliverables and outputs in Jems once available & direct MA/JS feedback on those deliverables/outputs listed in the monitoring plan
 - Verification of milestone achievement (“control points”)



- Project reviews
 - Collaborative approach (“fitness check”)
 - Usually 1 review per project (2nd review optional)



- Periodic joint progress reports
 - Joint Finance Report (JFR) after each financial reporting period (in principle 6 months*)
 - Joint Activity Report (JAR) after each activity reporting period (in principle 12 months*)

**longer or shorter reporting periods might apply especially at the end of the project*

NB: Reporting and monitoring at partner level is done through partner reports in Jems (in principle 6 months*)

MONITORING PLAN - KEY FEATURES

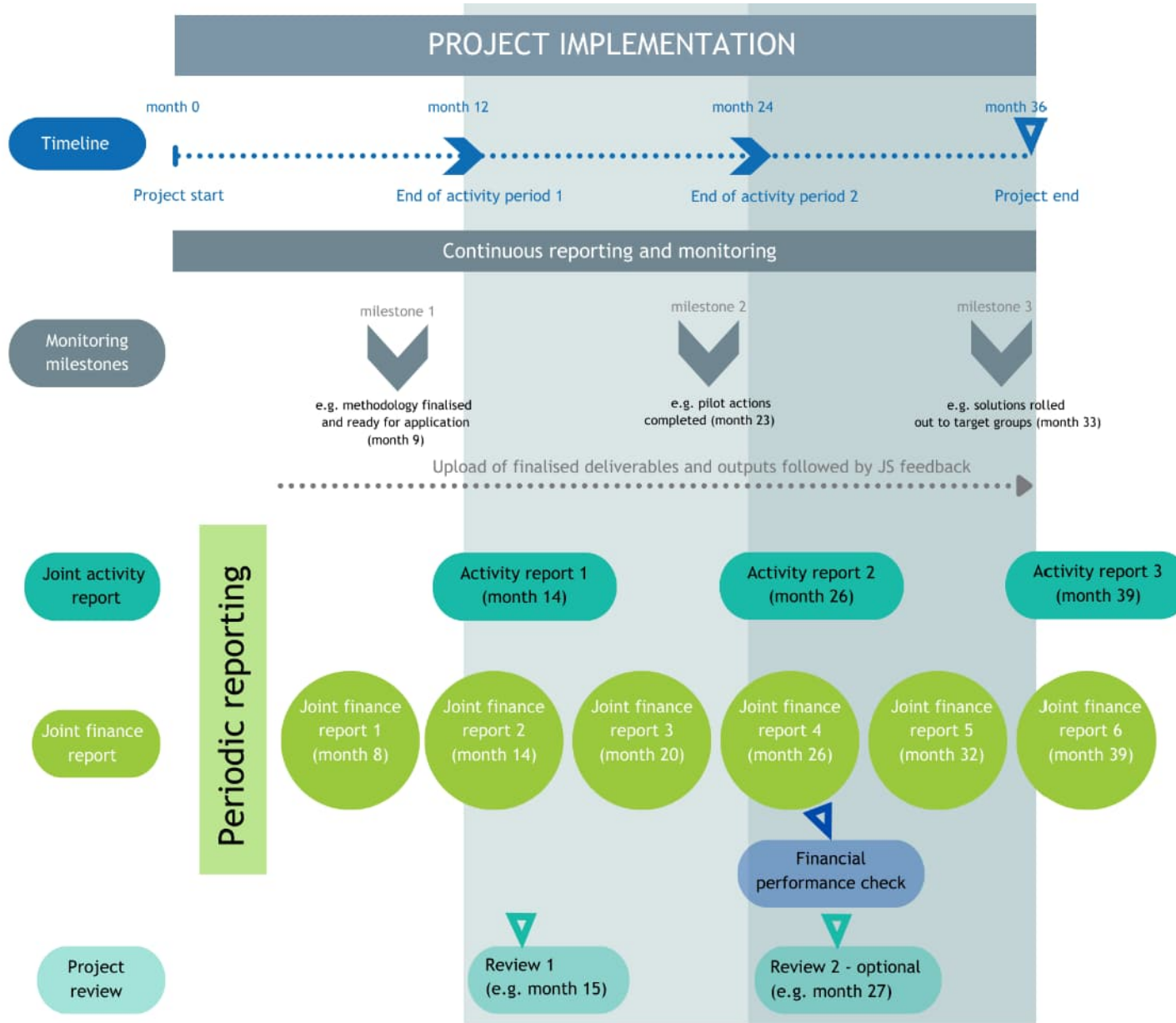
Monitoring plan → jointly setting the frame for the project monitoring

- Developed during the start-up phase
- Defines the project specific activity and finance reporting and monitoring schedule
- Jointly developed by the partnership and agreed with the MA/JS
- Serves as a management tool for MA/JS and for the partnership
- Is a pre-condition for the reimbursement of the preparation and contracting lump sum

Monitoring plan → covering comprehensively all main monitoring steps

- Periodic reporting (JAR & JFR) - dates of delivery
- Milestones - Scope of milestones and planned date of achievement
- Continuous reporting - selected outputs and deliverables incl. delivery date
- Project review(s) - date(s)
- Indirect State aid obligations (where applicable) - concerned activities & start date(s)

Reporting and monitoring overview



CHANGE IN THE MONITORING APPROACH



Traditional Reporting

Why this change?

- ✓ Reduction of administrative burden
- ✓ Targeted reporting focusing on results and on supporting beneficiaries
- ✓ No possibility for programme to pre-finance the projects
- ✓ Quicker reimbursement



Continuous Reporting & Monitoring



**Monitoring
Milestones &
selected Outputs**



**Disentangled
Periodic Reporting**

- Joint Activity Report (annually)
- Joint Finance Report (bi-annually)



**Project Reviews
(covering 1st year of
project
implementation)**



Interreg
CENTRAL EUROPE



Co-funded by
the European Union



Joint Secretariat
Interreg CENTRAL EUROPE Programme



www.interreg-central.eu



info@interreg-central.eu



+43 1 8908088-2403



facebook.com/InterregCE



Linkedin.com/in/interregce



Youtube.com/c/interregcentraleurope



Instagram.com/interregce

