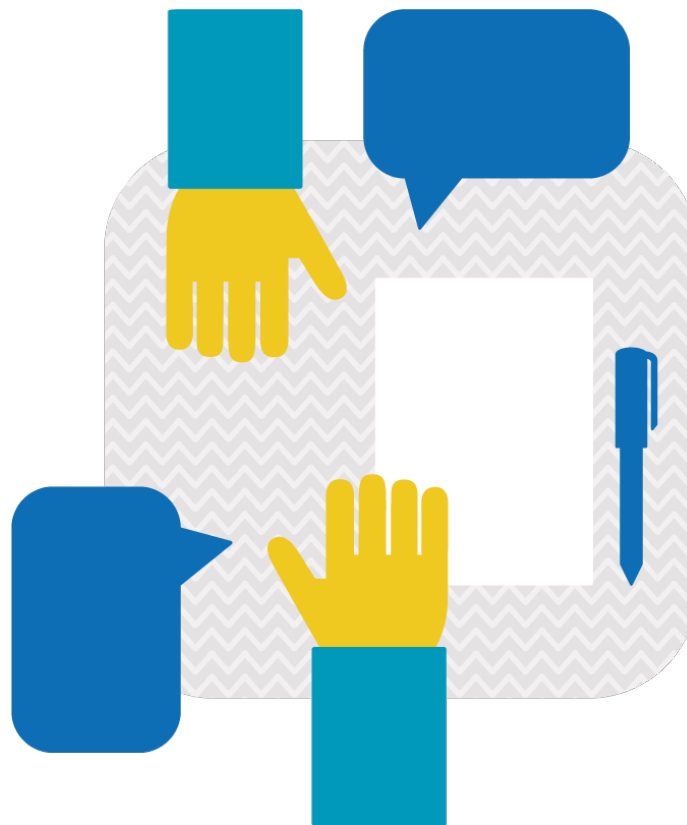


Jems User group meeting (7)



30 September - 1 October 2025

Lecce, | Italy





Jems User group meeting (7)

30 September - 1 October 2025
Lecce | Italy

Outlines

Interact invites all the programmes that signed the Joint Electronic Monitoring System (Jems) licence agreement to join the Jems User group meeting.

The Jems User group meeting exclusively gathers programmes already using Jems or taking the first steps to install it in their environment.

We want to encourage the participation of colleagues who are directly involved in the work with Jems and are familiar with the system's business logic.

We will accept two participants per programme to ensure fair representation of the programmes. Service providers of programmes are invited to the meeting as well.

This agenda provides a general overview of how the meeting is planned and structured.

Objectives

The meeting aims to:

- Inform on the state of play of Jems.
- Provide a platform to exchange on the most interesting topics
- Gather feedback on the practical use of the system



Jems User group meeting (7)
30 September - 1 October 2025
Lecce | Italy

Tuesday, 30 September 2025

09:15 – 09:30	Registration
09:30 – 09:45	Welcome and introduction <i>Interact programme</i>
09:45 – 10:45	State of play <i>Interact programme</i>
10.45 – 11.15	Coffee break
11.15 – 12.30	Programme own developments <i>Programme demonstrations, Q&A</i>
12.30 – 13:30	Lunch break
13:30 – 15:00	Open Space: A Collaborative Discussion <i>Programmes bring topics to collaboratively come to solutions</i>
15:00 – 15:30	Coffee break
15:30 – 17:00	Open Space: A Collaborative Discussion <i>Continuation</i>

End of the first day!



Jems User group meeting (7)
30 September - 1 October 2025
Lecce | Italy

Wednesday, 1st October 2025

- | | |
|----------------------|---|
| 09.15 – 09.30 | Good morning |
| 09.30 – 10.30 | Working with Jems & Data
<i>Interact programme & programme exchange</i> |
| 10.30 – 11.00 | Coffee break |
| 11.00 – 11.45 | Post27 regulation and Monitoring systems
<i>Interact programme & programme exchange</i>
<i>Open discussion</i> |
| 11:45 – 12.00 | Q&A and closure
<i>Interact programme and Programmes – any open questions</i> |

End of the event!



Jems User group meeting (7)

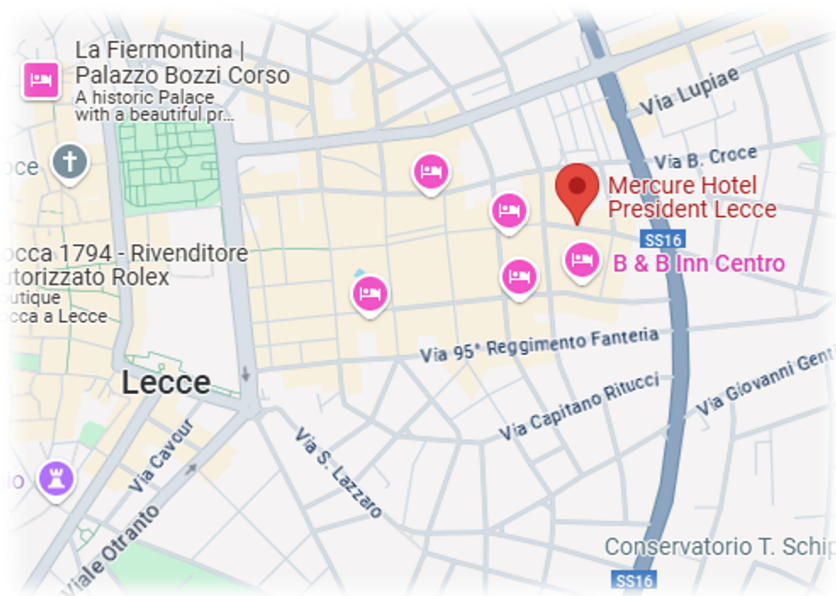
30 September - 1 October 2025
Lecce | Italy

Practicalities

Please note: Participants are responsible for their own travel arrangements!

Venue

Mercure Hotel President Lecce
Via Antonio Salandra, 6, 73100 Lecce LE, Italy
<https://www.hotelpresidentlecce.it/en/>
Phone: +39 0832 456111
Email: president@greenblu.it



Travel

The meeting venue is located within a 10-minute walk from Piazza Sant'Oronzo and the Roman Amphitheater, and approximately 2 km from Lecce train station.

Several airlines (including lowcost) fly to the two main Apulian airports of Brindisi and Bari ([Aeroporti di Puglia](#)) from the main European Capitals and other national and international destinations, both directly and with daily connections to the major Italian hubs (i.e., Rome Fiumicino, Milano Malpensa or Milano Linate).

First option:

The closest airport to the city of Lecce is the "[Aeroporto del Salento \(BDS\)](#)", located in Brindisi (c.a 45-50 km).

From Brindisi Airport, several shuttle bus run at different times of the day (aligned with flight arrivals and departures), reaching Lecce, in Largo C. Bene (Foro Boario) or nearby:



Jems User group meeting (7)
30 September - 1 October 2025
Lecce | Italy

[CO.TR.A.P. Consorzio Trasporti Aziende Pugliesi](#) (one-way ticket cost: online 6.50 EUR and 8.50 on-board; travel time: 40-45 min);

[PugliairBus](#) (one-way ticket cost: online 6.50 EUR; travel time: 40 min);

[Transfer service](#) from the airport to your accommodation is offered from 20 EUR/person (one-way).

Another solution that could be considered is:

1. reaching Brindisi train station from Brindisi Airport by [shuttle bus](#) (route AP by STP Brindisi, frequency 30 minutes; one-way ticket cost: 1,20 EUR; travel time: 15 min) or taxi (one ride cost 15-20 EUR; travel time: 10 min);
2. getting to Lecce station from Brindisi Centrale by regional (one-way ticket cost: 3,40 EUR; travel time: 30 min) or high-speed [trains](#) (InterCity and Frecciargento).

Also, connections between airports and to other destinations (i.e., Brindisi station) are available [here](#).

Second option:

The [International Airport “Karol Wojtyła” of Bari \(BRI\)](#), at about 160 km from Lecce.

Bari airport is connected:

- to Lecce by train that could be taken directly at the airport station (one-way ticket cost: 15-24 EUR, online tickets available [here](#)), with a change at Bari Centrale FNB station;
- to Bari Central Station by shuttle (one-way ticket cost: 5,00 EUR; travel time: 25-30 min) and urban (one-way ticket cost: 1,00 EUR; travel time: 39 min) [bus](#) and [train](#) (one-way ticket cost: 5,30 EUR; travel time: 20 min), then proceeding for Lecce in the desired way.

Private taxi service is available at both Brindisi and Bari Airport. However, if it is the choice, it is recommended to book the ride from Brindisi to Lecce (one-way ticket cost: c.a. 80-90 EUR; travel time: 30-40 min).

By train

Lecce station make rail connections to/from: Milan (9 h), Bologna (7 h), Turin (10 h), Rome (5 h), Naples (5 h), Venice (9 h), Bari (90 min) and Brindisi (30 min). Train station is about 1 km from the historical city center.

For information on ticket costs and schedules, you can visit the [Trenitalia website](#).

By car

If you are coming from the Adriatic Coast, take the A14 (E55) highway to Bari. Then follow the signs for the SS16 Bari-Lecce.

If you are coming from the Tyrrhenian Coast, take the A16 highway to Bari and then follow the signs for the SS16 Bari-Lecce.



Jems User group meeting (7)
30 September - 1 October 2025
Lecce | Italy

Accommodation

For additional accommodation options you can check: www.booking.com, www.hrs.com, or similar hotel booking websites.

Other Information

Should you have any questions or need any further information, please feel free to contact:

Jose Almeida jose.almeida@interact.eu and

Alexandra Kulmer alexandra.kulmer@interact.eu

Pieter Lowers pieter.lowers@interact.eu