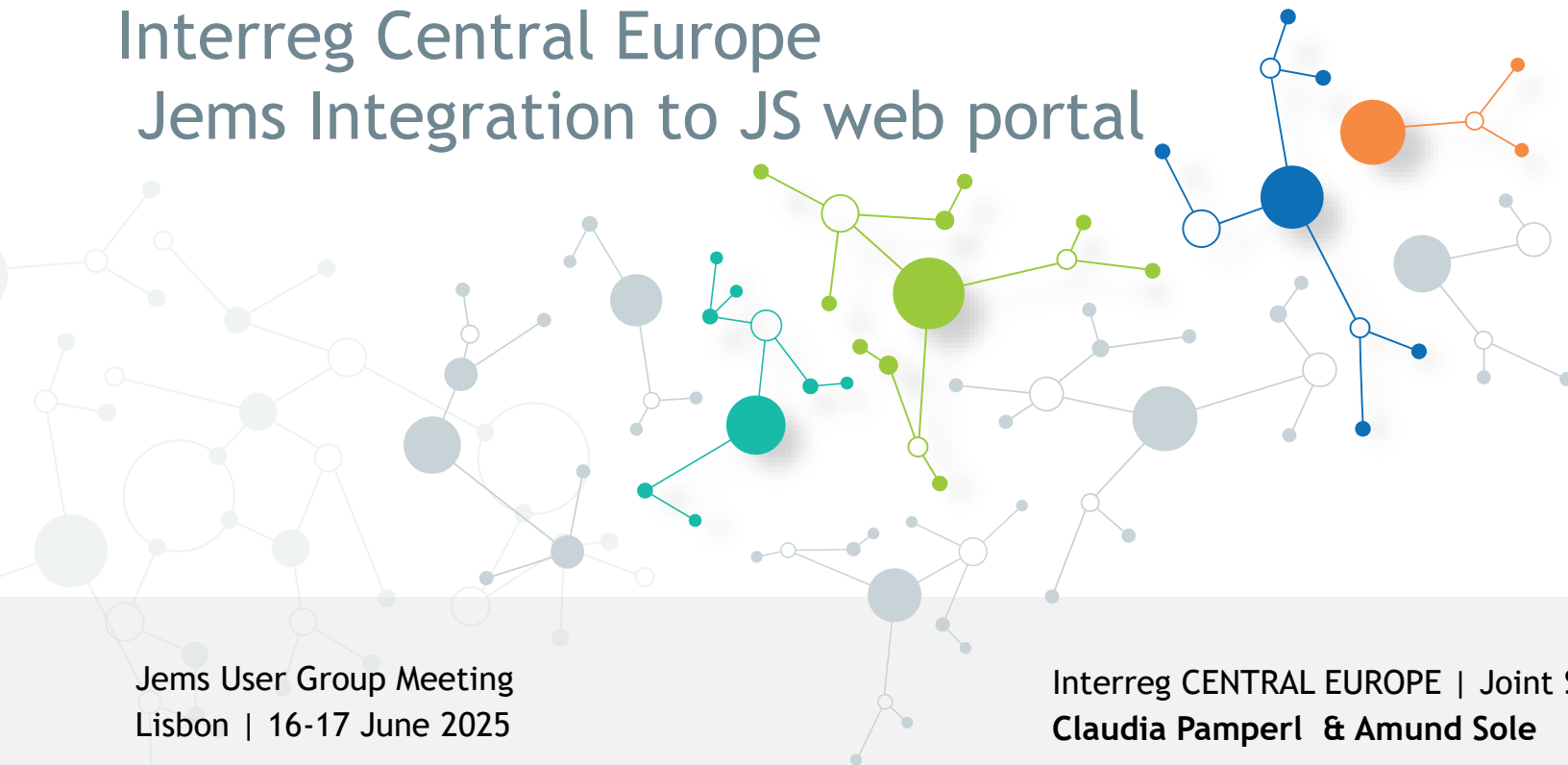


# Interreg Central Europe Jems Integration to JS web portal

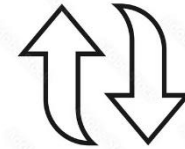


Jems User Group Meeting  
Lisbon | 16-17 June 2025

Interreg CENTRAL EUROPE | Joint Secretariat  
Claudia Pamperl & Amund Sole

# JS web portal

Jems integrations



STAFF PORTAL

# API VS SQL

## API

- More calculated data
- Perform actions in Jems
- Backend access not needed
- Server intensive
- Slow

## SQL

- Faster for large datasets
- Raw data
- More backend calculations
- DB access needed

Situation dependent

■ Arachne Export

■ Call factsheets

■ WorkFlow Tool



# API solutions

---

# ARACHNE



ANTI FRAUD  
TOOL



VOLUNTARY  
BASIS



CONTINUOUS  
UPLOADING



HARMONIZED  
APPROACH

# JEMS EXPORT



API BASED



XML FORMAT



UNIVERASLY JEMS  
COMPATIBLE



CALL  
SPECIFIC

# CALL FACT SHEETS

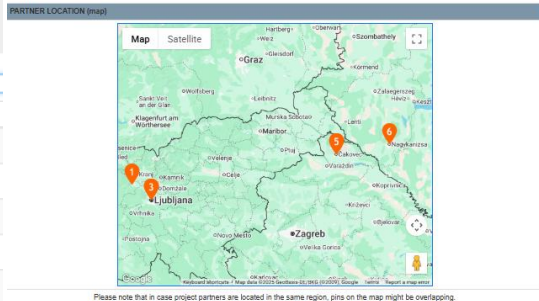
## Fact Sheet

In this section you can check any fact sheet...

**NOTE:** Async/await feature is still not available to all browsers - Please use Chrome 52 or later

Project Index	Acronym	Desk Assessment
CE0301019	MobilityAllianCE	<a href="#">Desk Assessment</a>
CE0301020	Central Food Valley	<a href="#">Desk Assessment</a>
CE0301024	THRIVE	<a href="#">Desk Assessment</a>
CE0301028	BRIDGES	<a href="#">Desk Assessment</a>
CE0301029	SoSUD-CEM	<a href="#">Desk Assessment</a>
CE0301032	SHARE	<a href="#">Desk Assessment</a>
CE0301035	CURA	<a href="#">Desk Assessment</a>
CE0301038	InterSWaCS	<a href="#">Desk Assessment</a>
CE0301042	TelerhabCE	<a href="#">Desk Assessment</a>
CE0301050	R.I.S.E	<a href="#">Desk Assessment</a>
CE0301051	M-POV	<a href="#">Desk Assessment</a>
CE0301054	Brand4Talents	<a href="#">Desk Assessment</a>
CE0301055	CitiLedRevival	<a href="#">Desk Assessment</a>
CE0301061	MultiGreen	<a href="#">Desk Assessment</a>
CE0301075	FRUITS	<a href="#">Desk Assessment</a>
CE0301078	eGreen Talent	<a href="#">Desk Assessment</a>
CE0301083	CLHUBS	<a href="#">Desk Assessment</a>
CE0301085	CEticalHack	<a href="#">Desk Assessment</a>
CE0301088	MICRO-GOV	<a href="#">Desk Assessment</a>
CE0301087	RESILIENCE	<a href="#">Desk Assessment</a>

LIST OF PROJECT PARTNERS					
No	Institution name	Country	Inside programme area	ERDF budget (EUR)	TOTAL eligible budget (EUR)
LP	Development agency Sora Ltd. (RA SORA)	SI	yes	133.272,00	166.560,00
2	Institute for Spatial Policies (IPoP)	SI	yes	145.904,00	183.630,00
3	CIPRA Slovenia, Association for protection of the Alps (CIPRA Slovenia)	SI	yes	62.878,40	116.008,00
4	Međimurje County (MŽ)	HR	yes	71.932,00	89.915,00
5	TECHNOLOGY INNOVATION CENTRE MEDIMURJE Ltd. (TICM)	HR	yes	102.008,00	127.510,00
6	Nagykiszassa Business Incubator (NÖVG PIG)	HU	yes	91.400,00	114.250,00
TOTAL (EUR)				628.294,40	797.993,00
LIST OF ASSOCIATED PARTNERS					
No	Institution name	Associated To			
1	Municipality of Škofja Loka	RA SORA			



Please note that in case project partners are located in the same region, pins on the map might be overlapping.

QUALITY ASSESMENT SUMMARY				
Quality assessment	Assessor 1	Assessor 2	Average Score	Recommendations for improvement (R) Conditions for approval (C)
1. Relevance (max 20 points, threshold 12 points)	18	15	16.5	<b>Conditions for Approval:</b> C.1 Please ensure that all outputs are compliant with the definitions of output types and also review the output and result indicators regarding compliance with programme definitions/requirements (past development/implementation, ensuring a documented update, if applicable) and ensure a realistic target setting.  C.2 Please ensure that all outputs are compliant with the definitions of output types and also review the output and result indicators regarding compliance with programme definitions/requirements (past development/implementation, ensuring a documented update, if applicable) and ensure a realistic target setting.  C.3 Please ensure that all outputs are compliant with the definitions of output types and also review the output and result indicators regarding compliance with programme definitions/requirements (past development/implementation, ensuring a documented update, if applicable) and ensure a realistic target setting.
Thematic relevance (max 10 points)	9	7		

Relevance for the targeted SO and territoriality

\* With its aim to transform industrial zones into sustainably accessible hubs for employees commuting from peripheral and lagging areas through innovative mobility management plans in a FUA context and by introducing the role of mobility coordinators as well as through mobility planning related capacity building measures for local stakeholders the project proposal is well in line with the targeted specific objective SO2.5

\* The added value of transnational cooperation is seen in better efficiency and is well grounded in the common need of smaller, peripheral places for learning from good practices in mobility, jointly adapting to the specific needs of peripheral and lagging areas as well as in capacity building and policy innovation, clearly going beyond knowledge exchange; the envisaged activities offer sound evidence of a fairly effective cooperative environment.

\* The intervention logic is overall well conceived and logically set up ensuring consistency between project specific objectives and expected results, yet with too many outputs defined.

## Assessment scoring Jems Checklists

## Project overview Application form

Quality assessment	Assessor 1	Assessor 2	Average Score	Recommendations for improvement (R) Conditions for approval (C)	
3. Implementation (max 15 points, threshold 9 points)	10	9.5	9.75	<u>Conditions for Approval:</u> C.2 Please ensure that for each output a final deliverable is foreseen in the work plan. C.3 Please better specify the foreseen pilot actions as well as related solutions.  <u>Recommendations:</u> R.2 It is recommended to increase the transparency of the work plan by reviewing the foreseen deliverables and the timing in order to capture the main outcomes of the activities. R.3 It is recommended to more clearly emphasize communication activities and outreach to target groups in the work plan.	
Methodology and work plan (max 10 points)	7	6			
<p>The overall approach and structure of the work plan reflects appropriately the intended project scope and its expected results, including funding concept for the new role of mobility coordinators and network. However, there are some shortcomings in the definition, timing and quantification of deliverables and outputs, in particular with regard to transferability and not well reflected FUA aspect concerning the pilots, it remains unclear whether mobility plans will be tested.</p> <p>Communication activities are specified, given good attention in the work plan aimed at outreach to stakeholders and relevant target groups by following a participatory approach. The involvement of local stakeholders is envisaged, though without clearly ensuring their committed involvement.</p> <p>Partnership of actors is addressed through the open availability of the outputs through a platform; the project proposal presents an overall good concept for sustaining outputs by integrating mobility plans into local and regional development strategies, as well as developing a funding model for mobility coordinators. Transferability is overall fairly considered, as the approach is the potential to be adopted in other areas.</p> <p>A sound management concept with clear tasks is proposed, quality and risk management measures are foreseen.</p>					
Budget (max 5 points)	3	3.5			
<p>Overall, the project represents good value for money taking into account the size of the partnership and the planned activities. The budget allocations per project partner sufficiently reflect the partners' responsibilities, except for PP2, with the highest project budget and, compared to the other partners, whose tasks not well reflected in the work plan. The financial contributions of the partners are not well balanced at country level since more than 50% of project total budget is allocated to one country.</p>					
Desk Assessment (Max 50 points)	Total average score (rounded) Percentage of total maximum score			36 72%	Invited to hearing (YES/NO): YES
Desk Assessment conclusions	With its aim to transform industrial zones into sustainably accessible hubs for employees commuting from peripheral and lagging areas through innovative mobility management plans the project proposal is well in line with the targeted SO2.5. Territorial relevance is well demonstrated by pointing out in detail the challenges of the addressed peripheral areas and the envisaged solutions, which are of clear benefit for targeted communities and beyond. The partnership ensures appropriate thematic experience and competence and comprises an adequate mix of organisations; although, this is not equally ensured for each of the involved areas. The overall approach and structure of the work plan are appropriate; however, there are some shortcomings in the definition, timing and quantification of deliverables and outputs, especially concerning the pilot actions. Overall, the budget represents appropriate value for money, yet the financial contributions of the partners are not fully balanced at country level and for PP2, tasks are not well reflected in the work plan, which is a shortcoming.				
HEARING (if applicable)	Assessor 1	Assessor 2	Hearing conclusions:		
	Hearing score (max 10 points)	9	9	During the hearing, the applicant demonstrated a thorough understanding of the project proposal, a clear vision of the project approach to addressing the territorial challenges and how to bring benefit to the targeted peripheral and lagging areas through enhanced sustainable mobility planning. The applicant offered competent answers to the questions posed during the hearing however, the explanation of pilot actions lacks some precision regarding the mobility coordinators.	
	Hearing score (average)		9		
Total average score after hearing (max 60 points)			45		
Percentage of total maximum score after hearing			75%		
Recommended for funding under conditions					

Administrative and State aid conditions (if applicable)

Administrative Conditions	Ca 4 Ensure that in case the partners' contribution (or part thereof) is coming from an external public source, it is correctly indicated in section B.1.8 of the application form. Ca 5 Ensure that all details included in section B of the application form for each partner are correct and up to date. Ca 6 For PP2 Nagykiszasa Business Incubator correct the legal status to "public".
State Aid Conditions	

# Workflow Tool WFT 2.0

---

Jems based



Project Search

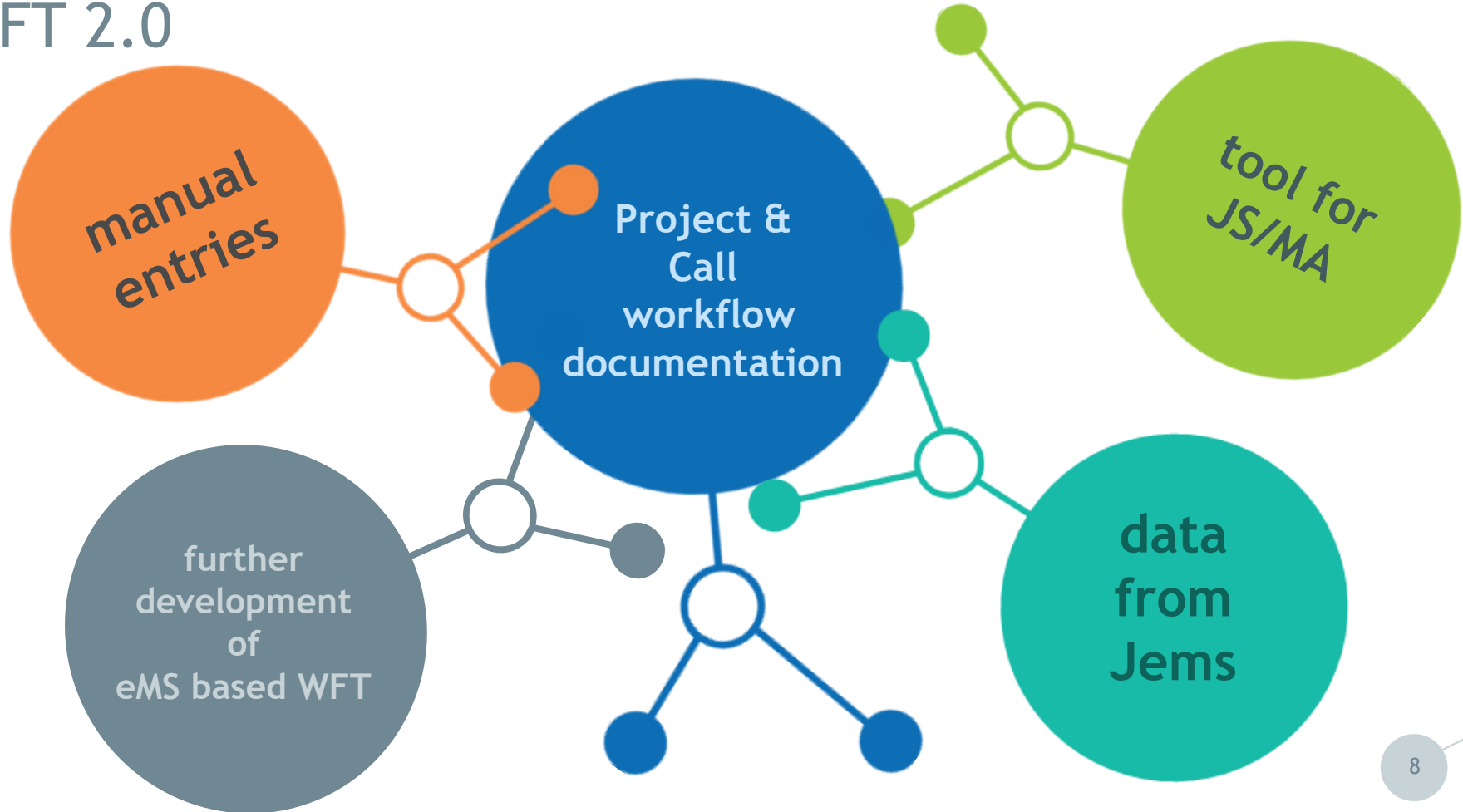
Call information

Uploads



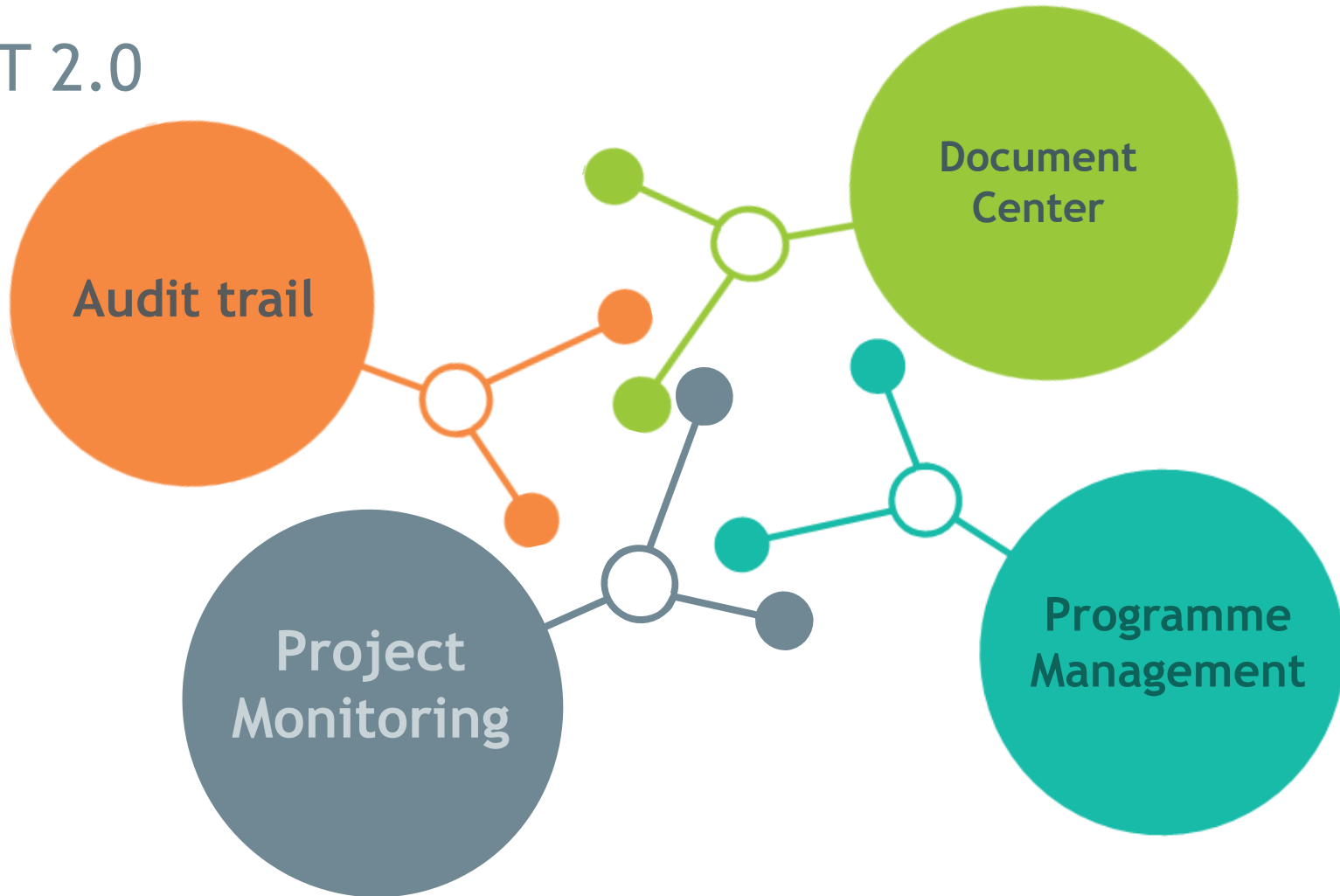
Search project

# WFT 2.0





# WFT 2.0



# Monitoring at a glance

Jems & WFT2.0 based

[← Leave PopUpUrbanSpaces](#)

▼ Activity

▼ Monitoring

▼ Subsidy Contract

+ Add new

Subsidy Contract 1

Monitoring Plan & Additional Information

**Performance Dashboard**

▼ Joint Finance Reports

JFR 1

JFR 2

JFR 3

JFR 4

JFR 5

JFR 6

▼ Joint Activity Reports

JAR 1

JAR 2

...

## Project Performance Dashboard

CE0100161

### Milestone 1

Title and planned delivery

**M1 - TRANSFORMATION**

Planned date: 29/02/2024

Acceptance (date) 04/03/2024 by Claudia Pamperl

PO conclusion incl follow-up (if applicable)

The project is well on track and in line with workplan with minor deviations. - The milestone has been achieved. Milestone 1 and LP provided all available deliverables (CR, milestone & other) before the meeting and were of satisfying quality. The milestone 1 took place as online meeting with a presentation of the project achievements related to M1 (ppt presentation by LP) followed by a discussion with the JS. LP highlights good exchange & cooperation with other CE projects and beyond. JS remarked that newsletter link on project website is broken and website needs to be further developed. JFR1/JFR2: importance of setting access restriction for GDPR sensitive data;

### Milestone 2

Title and planned delivery

**M2 - PLANNING**

Planned date: 31/08/2024

Acceptance (date) 03/09/2024 by Claudia Pamperl

# SQL reports

---

- Programme and project overviews for JS staff
- Payment info for NCPs



# Internal Reports

- Project performance overview
- Controller certificate user comparrison
- Investments «Living table»
- Gernerall programme data overviews

## REPORT

In this section you can generate multiple reports depending on your user privileges

Show 50 entries

Search:

Section	Report Name	Download
CE 21-27	Desk assessment Call 3 CE 21-27	<a href="#">External Expert</a> <a href="#">JS Assessor</a>
CE 21-27	Control Certificate User Comparison CE 21-27	<a href="#">All reports</a>
CE 21-27	Investments Overview CE 21-27	<a href="#">All Investments</a>
CE 21-27	Indicator Overviews CE 21-27	<a href="#">Result Indicators</a> <a href="#">Output Indicators</a>
CE 21-27	Project Performance Overview	<a href="#">All projects</a>

# Payment info For NCPs

- Export permissions for country specific NCPs needed for export
- Not available in Jems
- Use permissions from Web portal to export Jems data

Show  entries

Custon Identifier	Acronym	Project Status	Call	SO	M1 - planned date	M1 - acceptance date	M2 - planned
CE0100007	SMART CIRCUIT	CONTRACTED	1	SO2.3	2024-03-31	2024-05-28	2025-03-31
CE0100013	Health Labs4Value	CONTRACTED	1	SO1.1	2023-09-30	2023-10-27	2024-09-30
CE0100019	MISSION CE CLIMATE	CONTRACTED	1	SO2.2	2024-03-31	2024-04-29	2024-09-30
CE0100032	MECOG-CE	CONTRACTED	1	SO4.1	2023-05-31	2023-09-05	2024-08-30
CE0100034	ACCESSMILE	CONTRACTED	1	SO3.1	2024-03-31	2024-03-26	2025-05-31
CE0100038	DigiCare4CE	CONTRACTED	1	SO1.1	2024-02-29	2024-03-22	2024-08-31

	A	B	C	D	E	F	G
1	Custon Identifier	Acronym	Project Status	Call	SO	M1 - planned date	M1 - acceptance
2	CE0100007	SMART CIRCUIT	CONTRACTED	1	SO2.3	2024-03-31	2024-05-28
3	CE0100013	Health Labs4Value	CONTRACTED	1	SO1.1	2023-09-30	2023-10-27
4	CE0100019	MISSION CE CLIMATE	CONTRACTED	1	SO2.2	2024-03-31	2024-04-29
5	CE0100032	MECOG-CE	CONTRACTED	1	SO4.1	2023-05-31	2023-09-05
6	CE0100034	ACCESSMILE	CONTRACTED	1	SO3.1	2024-03-31	2024-03-26
7	CE0100038	DigiCare4CE	CONTRACTED	1	SO1.1	2024-02-29	2024-03-22
8	CE0100042	GreenScape (CE)	CONTRACTED	1	SO2.2	2024-02-29	2024-04-23
9	CE0100046	DREAM_PACIFIC	CONTRACTED	1	SO3.1	2024-01-31	2024-02-08
10	CE0100048	Capacity2Trajectory	CONTRACTED	1	SO1.2	2023-08-31	2023-09-19
11	CE0100051	MESTRI-CE	CONTRACTED	1	SO2.1	2023-09-30	2023-12-06
12	CE0100054	SUSTANCE	CONTRACTED	1	SO3.1	2024-03-31	2024-04-09
13	CE0100055	H2CE	CONTRACTED	1	SO2.1	2023-10-31	2024-01-10
14	CE0100058	NXTLVL Parklet	CONTRACTED	1	SO2.5	2024-04-30	2024-05-20
15	CE0100059	Clim4Cast	CONTRACTED	1	SO2.2	2023-12-31	2024-01-12
16	CE0100067	Ready4Heat	CONTRACTED	1	SO2.2	2023-09-30	2023-11-13
17	CE0100071	TRANS GEO	CONTRACTED	1	SO2.1	2023-05-31	2023-08-24
18	CE0100081	IFT for CE	CONTRACTED	1	SO2.1	2024-03-31	2024-04-17

**Interreg**  
CENTRAL EUROPE



Co-funded by  
the European Union



Joint Secretariat  
Interreg CENTRAL EUROPE Programme



[www.interreg-central.eu](http://www.interreg-central.eu)



[info@interreg-central.eu](mailto:info@interreg-central.eu)



+43 1 8908088-2403



[Facebook.com/InterregCE](https://Facebook.com/InterregCE)



[Linkedin.com/company/interregce](https://Linkedin.com/company/interregce)



[Youtube.com/c/interregcentraleurope](https://Youtube.com/c/interregcentraleurope)



[Instagram.com/interregce](https://Instagram.com/interregce)

