



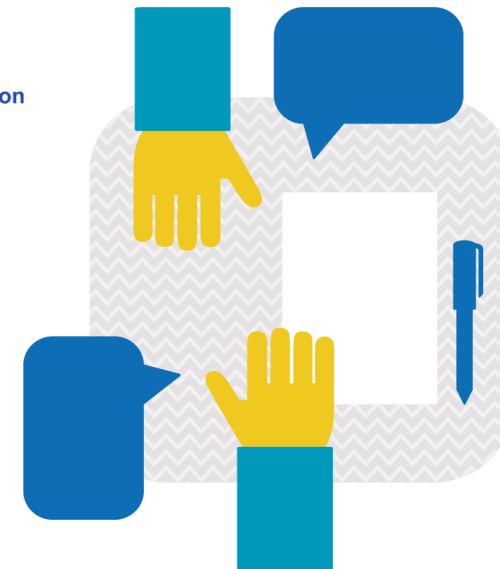
ALENTEJO
2030

Programa Regional
do Alentejo

Interact



Co-funded by
the European Union
Interreg



Innovation Villages

Cooperation actions:
Shared knowledge
towards greater
impact

5 June 2025



Arnhem | Netherlands

tiago.pereira@ccdr-a.gov.pt



Os Fundos Europeus mais próximos de si.

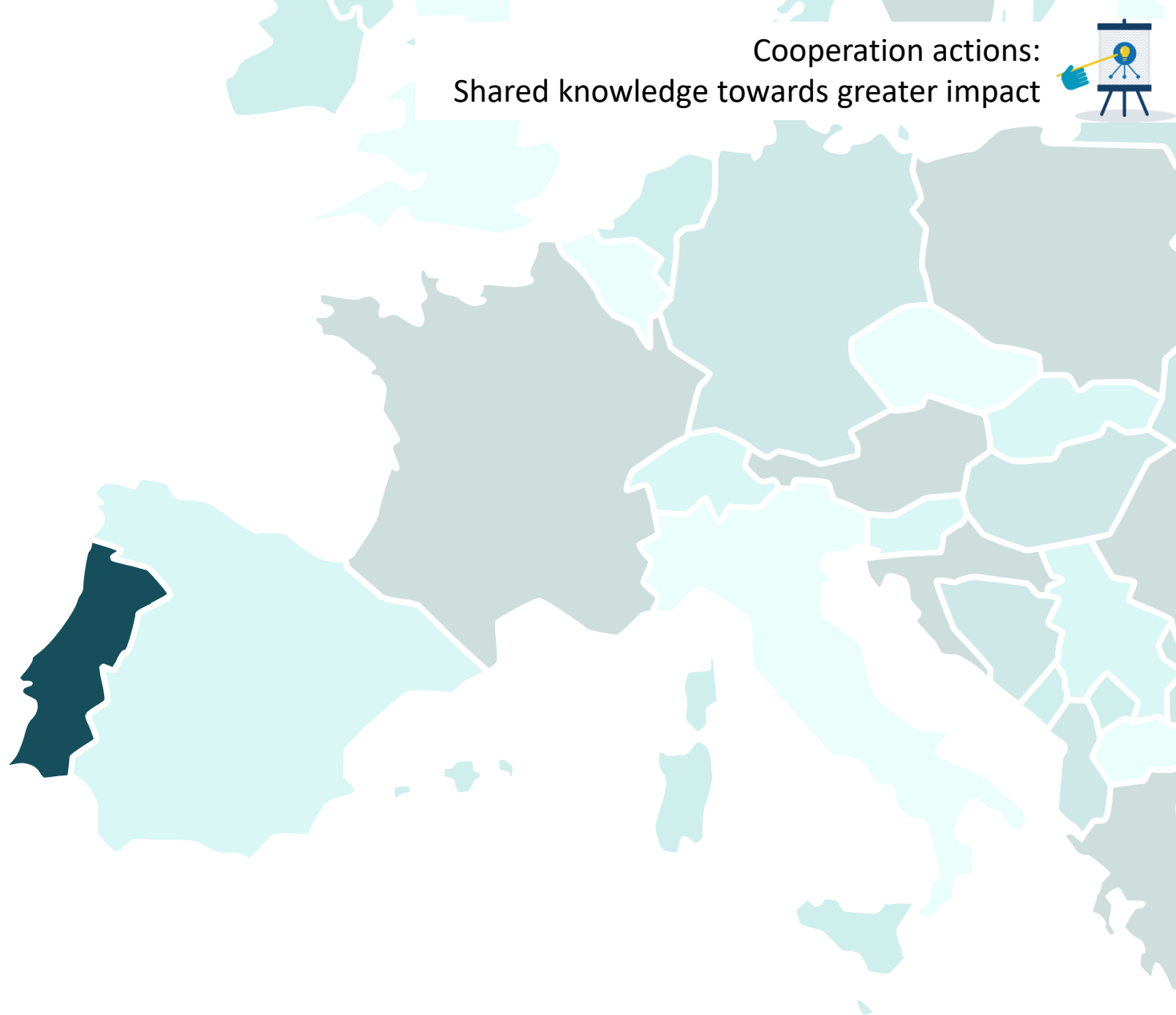


Cofinanciado pela
União Europeia

ALENTEJO



Cooperation actions:
Shared knowledge towards greater impact



Interact



Co-funded by
the European Union
Interreg

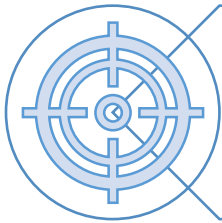


Cofinanciado pela
União Europeia

Os Fundos Europeus mais próximos de si.



Non-Urban Cohesion Partnerships (SO 5.2)



Refers to the presentation of **Strategy and Action Plan** proposals for the development of partnerships in the Alentejo region



Strengthen the **importance of territorial cohesion and the opportunity for participation of local stakeholders**



Established in the Portugal 2030 Partnership Agreement



Participatory process



Relatório final da consultoria para a constituição de
Parcerias Não Urbanas – CCDR Alentejo

Resultados do processo de auscultação

Dezembro de 2023



Apêndice ao Relatório final da consultoria para
constituição de Parcerias para a Coesão Não
Urbanas

Integração dos contributos da Consulta Pública
efetuada em janeiro 2024 | CCDR Alentejo

abril 2024



1





Objectives of the Call



Support and **local development** through innovative strategies



That contribute to integrated territorial development and the promotion of social and economic cohesion in rural areas



Eligible Entities

Consortia led by:

- Regional or Local Development Agencies and Associations
- Business associations
- Local Authorities
- Intermunicipal Communities



Financial Allocation

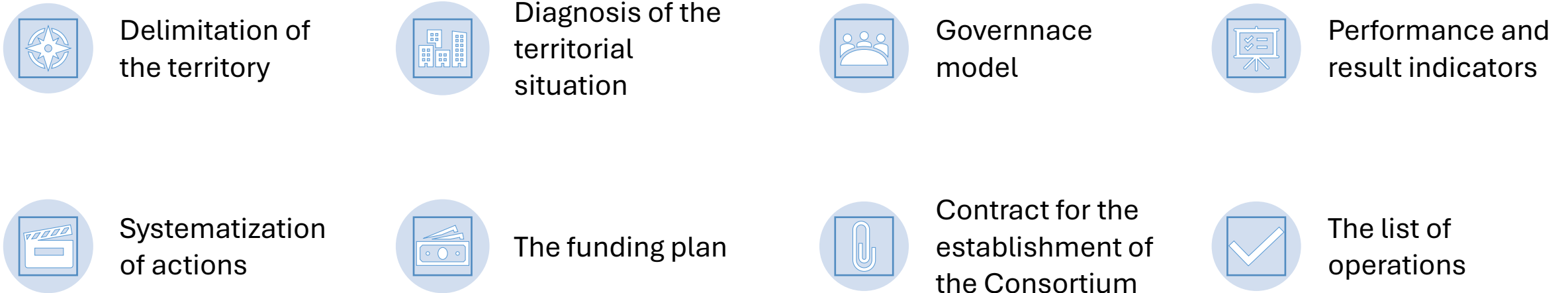
- **8 Million**

European Regional Development Fund (ERDF)

- We received proposals for
12 Million Euros



Admissibility Conditions





The Strategy and action plan must demonstrate:



Investments inspired by the initiative should be supported in the **New European Bauhaus (NEB)**



Present an evaluation of the strategy based on the **Self-Assessment Tool for Territorial and Local Development Strategies (SAT4TER)**



Identify the strategy's contributions to achieving the **Sustainable Development Goals (SDGs)**



Project Typologies

SUPPORT, ARTICULATION AND ANIMATION NETWORK

- Coordination and training team, operating throughout the region, training program for people and organizations, digital information platform(s), training and regional collaboration;

LOCAL DEVELOPMENT PLANS

- Action plans generated and managed by consortia, integrating local micro development projects, promoting new models of local governance in a network of innovation and local skills centers;

INNOVATION VILLAGES

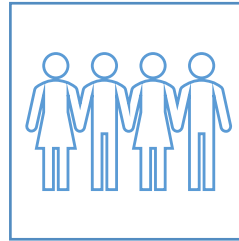
- Local competence centers, innovative micro projects and innovation experimentation in villages, with a strong focus on creativity, sustainability and energy efficiency.



Investment Types



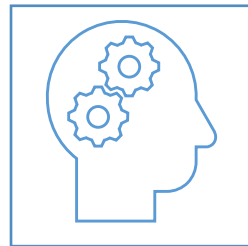
Refunctionalization of collective equipment and qualification of public space



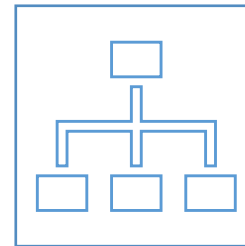
Animation of the network of local actors



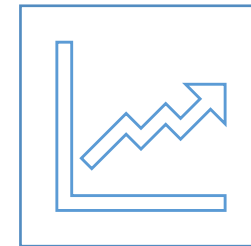
Training of local actors



Specialized technical support for social entrepreneurship projects



Governance structures



Impact assessment actions

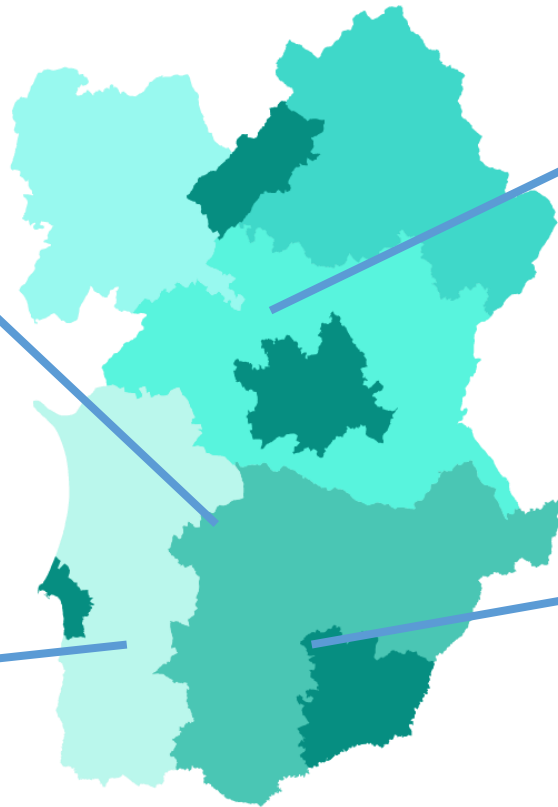


Examples of applications received

WP4: MIN'ARTE LOUSAL



ISTO - INOVAÇÃO E SUSTENTABILIDADE NO TERRITÓRIO DE ODEMIRA



CASA BRANCA FARM, FOOD AND ART LAB

ALDEIA DE INOVAÇÃO DE SANTA CRUZ

GESTÃO DE PROJETO		
	AÇÕES	ENTREGAS
HORTAS COMUNITÁRIAS	Oficinas: Princípios de Design em Permacultura e Práticas e técnicas de Agricultura Sintrópica	100 participantes nas oficinas
	Design, construção e plantio das hortas Modelo	3 Hortas piloto construídas na Aldeia de Santa Cruz
	Cultivo dos alimentos e monitoramento do progresso das hortas	Relatório Participado de Avaliação: ganhos e desafios na adoção de práticas regenerativas na horta
HOSPEDAGEM	Recrutamento, seleção e treinamento dos anfitriões	8 espaços de alojamento adequados e credenciados
	Preparação e acreditação dos espaços de Alojamento	Protocolo do anfitrião: manual de recepção dos hóspedes em Santa Cruz
GASTRONOMIA	Formação: Ensinando culinária Alentejana	5 treinamentos gastronômicos
	Formação: Limpeza e segurança na cozinha	5 a 10 "Joanas" capacitados a oferecer workshops de culinária alentejana