

The partnership principle and its application in Interreg – taking stock

Besiana Ninka, Ilze Ciganska, Daniela Minichberger | Interact |

09.04.2025

Interact



Co-funded by
the European Union
Interreg



This meeting will be recorded.

Please turn off your video if you do not want to be recorded.
Recording meetings helps us share content with those who cannot be here.

Thank you

WHY this online session

- To reflect and take stock
- To look ahead together



WHAT is the aim

- Enhance our collective understanding of the partnership principle
- Share practical experiences and address real challenges
- Get involved: ask questions, share your views, and learn from one another.



Agenda

01

Introduction

02

The partnership principle and the importance of its application

03

Partnership in action: experience sharing

04

Challenges for partners' involvement and approaches to tackle them

05

Wrap up, closure and next steps

How do you ensure the implementation of the partnership principle in your programme?

Your feedback from the registration

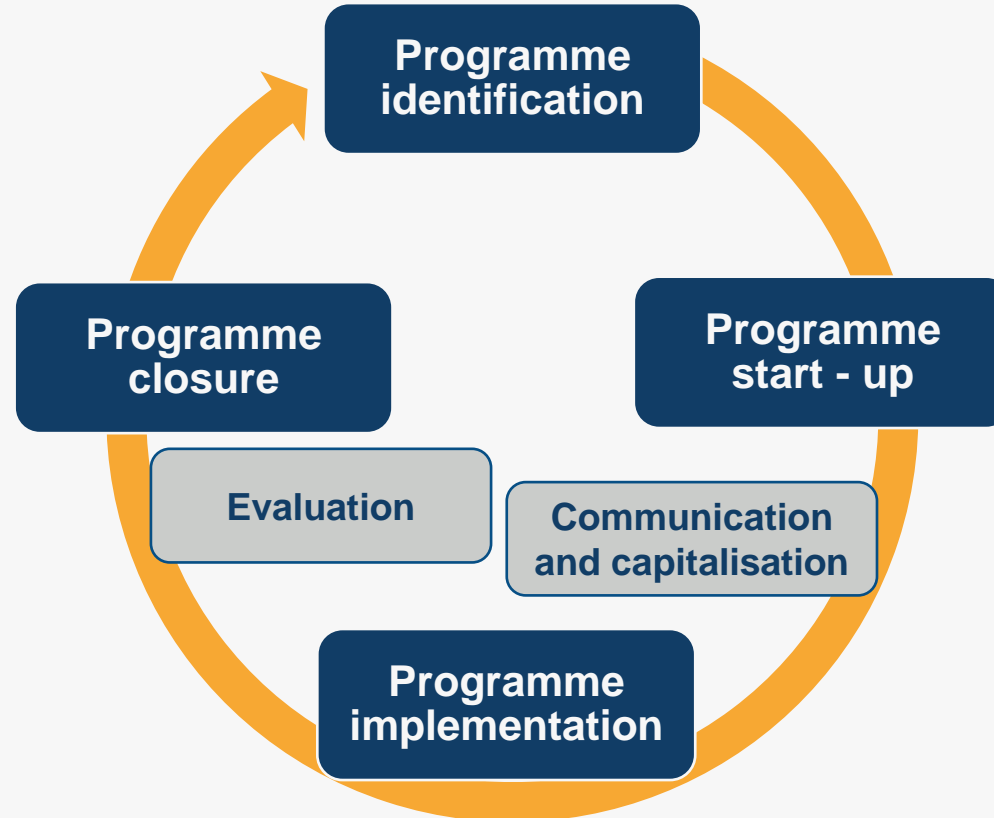
- Embedded in the programme rules,
- Throughout the entire programme cycle,
- Represented in the Monitoring Committee,
- Project level.

Our focus today

Partnership principle at project level, i.e. joint development, joint staffing, joint financing and joint implementation, or LP principle.

Partnership principle at programme level, i.e. engagement of stakeholders throughout the whole programme lifecycle, especially within the MC.

The partnership principle within the programme lifecycle

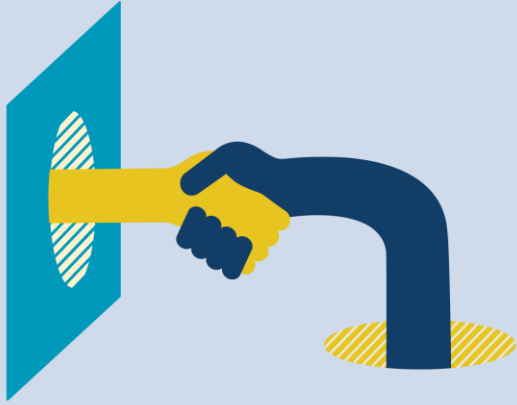


What improvements would be necessary to enhance the implementation of the partnership principle?

Your feedback from the registration

- Broaden participation,
- Capacity building and support,
- Stronger engagement and communication,
- Balanced representation and empowerment.





The partnership principle and the importance of its application

Simona Pohlová, DG REGIO





Partnership in action: experience sharing. Different approaches to implementing the partnership principle

Olivier Baudelet, DG REGIO

Anja Lansberg, Interreg Germany – Denmark

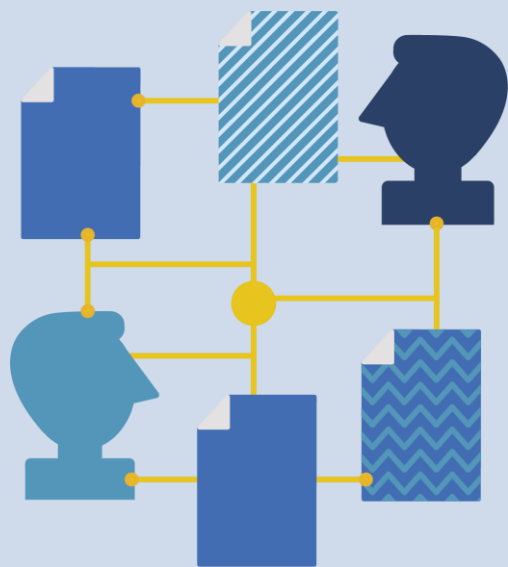
Johannes Gabriel, Interreg Danube Region

Alice Bornot, Interreg ALCOTRA

Desislava Tencheva, Interreg IPA Bulgaria – Serbia

Myrna van Wolven, Rosa Hendriks, Interreg Meuse – Rhine (NL-BE-DE)





Challenges for partners' involvement and approaches to tackle them

Anna Modzelewska, DG REGIO



Forthcoming events

- Shaping the Future: Interreg's Role in the Post-2027 MFF Consultation, 10 April, online
- Let's put territoriality on the map, 28 May, Vienna
- Cooperation actions: Shared knowledge towards greater impact, 5-6 June, Arnhem
- Interreg Knowledge Fair, 4-5 November (tbc)

March

April

May

June

July

August

September

October

November

December

Thank you for being here!

Your opinion matters to us.

Please take a few minutes to provide us with feedback to help us improve our services.



Cooperation works

All materials will be available on:

[Interact / Events / The partnership principle and its application in Interreg – taking stock, 9 April 2025](#)